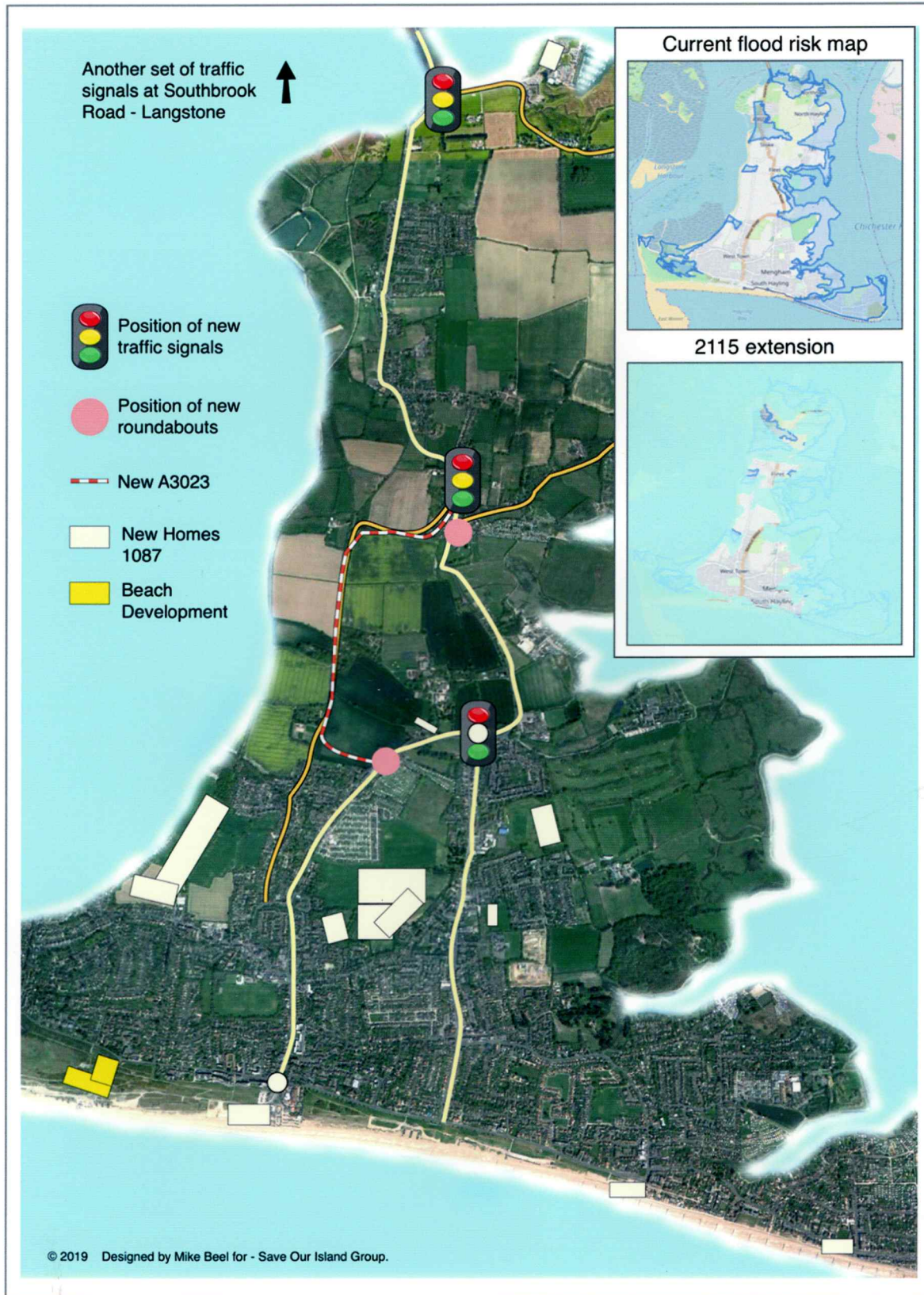


THIS IS WHAT'S HAPPENING TO YOUR ISLAND

OVER 1000 HOMES PROPOSED WITH MANY MORE TO COME.

THE A3023 WILL NOT BE EXPANDED = SEVERE CONGESTION AND FINALLY GRIDLOCK
FLOOD PROTECTION STRATEGY AND PROJECTS REMAIN UNPLANNED AND UNFUNDED



WANT TO FIND OUT MORE? GO TO

www.havant.gov.uk/hayling-island-transport-assessment

and click on first bullet point Appendix A and focus on: Section 9, Sub-sections 9.52 thru 9.57 for Mitigations

Detailed comments on the Local Plan must be made by Monday 18 March 2019 via **www.havant.gov.uk/localplan** and go to **HOW TO RESPOND** and **DROP IN SESSIONS**